

SharePoint Portal Server 2003: Migration Strategies and Solutions

**MSD2D SharePoint
Webcast Presentation**
February 24, 2004

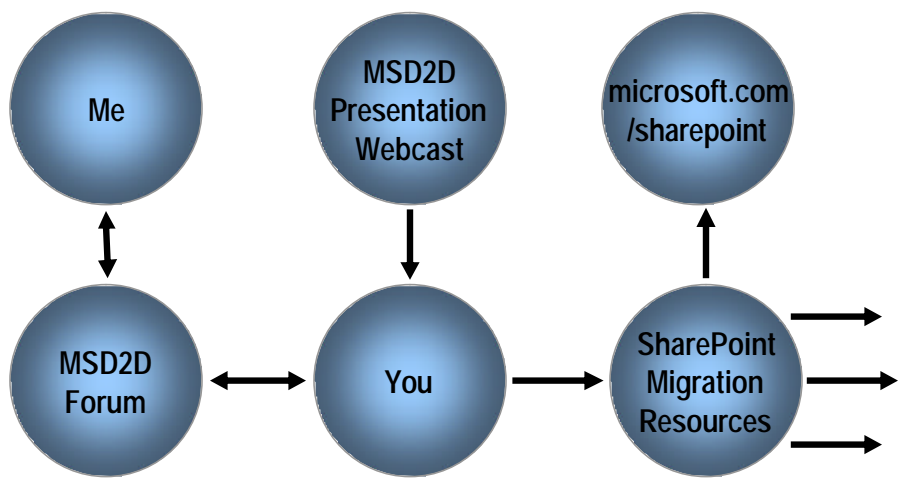


Active Collaboration Solutions
for Information Sharing

Presenter:
Michael Herman
Founder and CTO
Parallelspace Corporation

© 2004 Copyright Parallelspace Corporation

MSD2D Webcast Innovations



SharePoint Migration Resources

? <http://www.parallelspace.net/sharepoint>

- Technical White Papers
- Migration Tools
- Newsgroups
- Communities
- SharePoint Web Sites

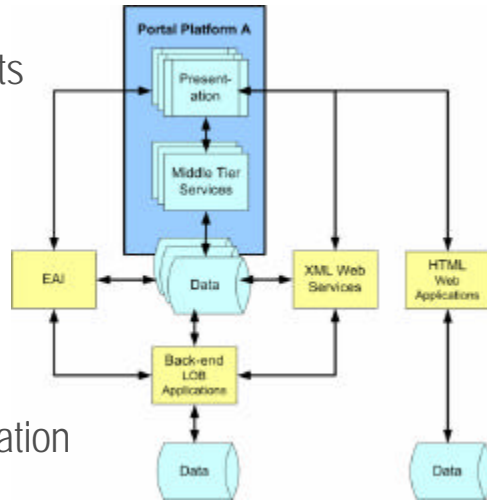
Agenda

- Thinking Through Your Portal Migration
 - Presentation, Services and Content Migration
 - Upgrade vs. Co-existence vs. Migration Strategies
 - Planning, Costing and Execution
- SharePoint 2003 Out-The-Box Capabilities
 - Upgrade.exe
 - *New* Document Library Migration Tools
- Migration Best Practices

Thinking Through Your Migration

Not only content ...

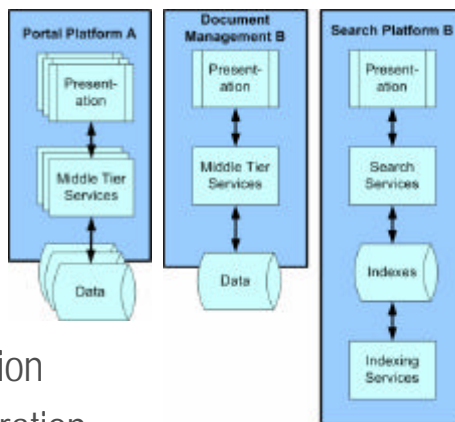
- Presentation Parts
- Portal Services
- Content
- Metadata
- Structure
- Security
- Enterprise Integration

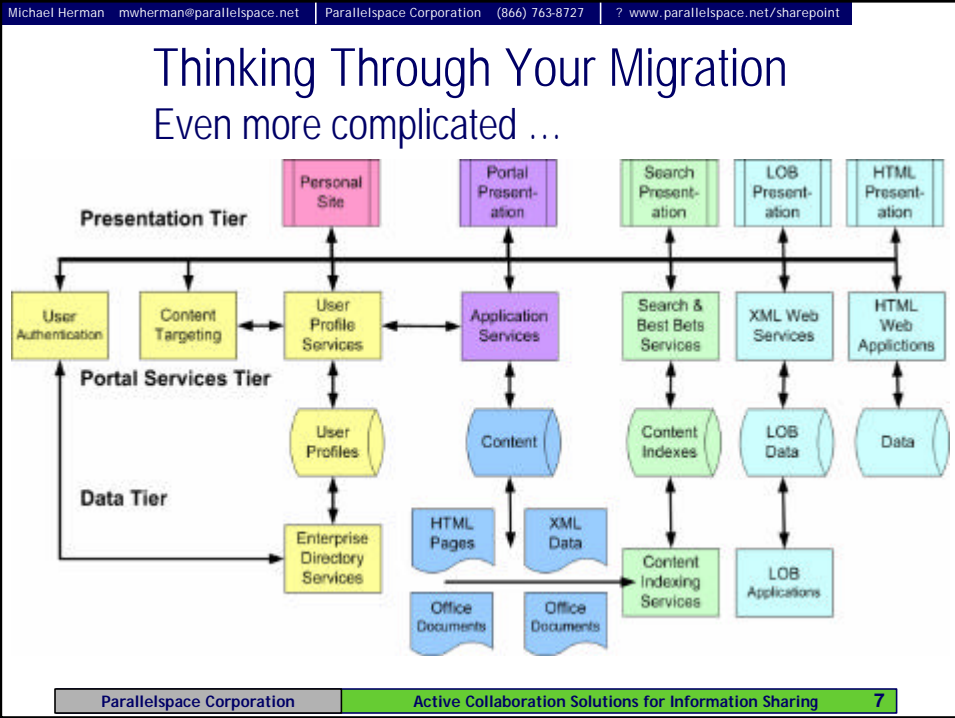


Thinking Through Your Migration

More complicated scenarios...

- Presentation Parts
- Portal Services
- Content
- Metadata
- Structure
- Security
- Enterprise Integration
- Co-existence / Migration





- Michael Herman mwherman@parallelspace.net Parallelspace Corporation (866) 763-8727 ? www.parallelspace.net/sharepoint
- ## Upgrade, Co-Existence or Migration? Definitions
- In-Place Upgrade
 - Install new version physically replacing previous version
 - Co-existence
 - Support parallel operation of both versions
 - Co-existence and Migration
 - Two-phase process: co-existence followed by migration
 - Migrate solution to and train users on new version
 - Co-existence = "Turning the new version on"
 - Migration = "Turning new old version off"
- Parallelspace Corporation Active Collaboration Solutions for Information Sharing 8

Michael Herman mwherman@parallelspace.net | Parallelspace Corporation (866) 763-8727 | ? www.parallelspace.net/sharepoint

Migration Scenarios Windows SharePoint Services

The diagram illustrates the migration path for Windows SharePoint Services. It consists of three stages, each represented by a blue diamond shape containing a cylinder representing a data store:

- FrontPage Sites:** The data store is labeled "File System".
- SharePoint Team Services 1.0:** The data store is labeled "File System & SQL Server". An arrow labeled "In-place Upgrade" points from the FrontPage Sites stage to this stage.
- Windows SharePoint Services 2.0:** The data store is labeled "SQL Server Document Libraries". An arrow labeled "Migrate" points from the SharePoint Team Services 1.0 stage to this stage.

■ *"Migrating from SharePoint Team Services and SharePoint Portal Server 2001 to Microsoft SharePoint Products and Technologies" white paper*

Parallelspace Corporation | Active Collaboration Solutions for Information Sharing | 9

Michael Herman mwherman@parallelspace.net | Parallelspace Corporation (866) 763-8727 | ? www.parallelspace.net/sharepoint

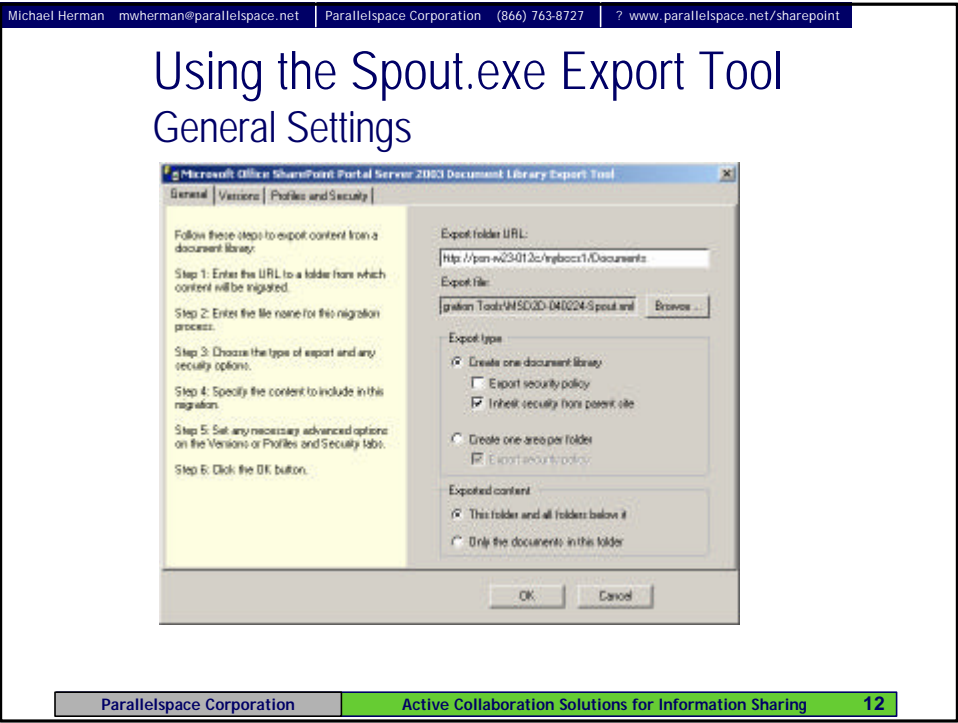
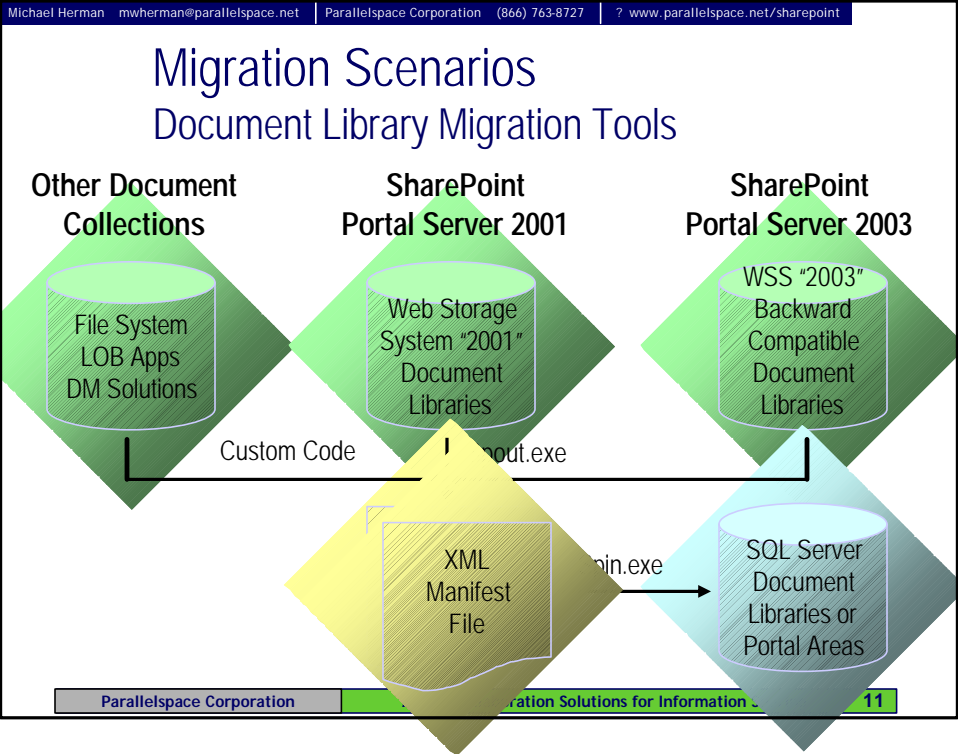
Migration Scenarios SharePoint Portal Server Out-of-the Box

The diagram illustrates the migration path for SharePoint Portal Server Out-of-the-Box. It consists of three stages, each represented by a green diamond shape containing a cylinder representing a data store:

- Other Document Collections:** The data store is labeled "File System LOB Apps DM Solutions".
- SharePoint Portal Server 2001:** The data store is labeled "Web Storage System '2001' Document Libraries". An arrow labeled "Custom Code" points from the Other Document Collections stage to this stage.
- SharePoint Portal Server 2003:** The data store is labeled "WSS '2003' Backward Compatible Document Libraries". Two arrows point from the SharePoint Portal Server 2001 stage to this stage: one labeled "Upgrade.exe" and another labeled "2. Import".

■ *"Migrating from SharePoint Team Services and SharePoint Portal Server 2001 to Microsoft SharePoint Products and Technologies" white paper*

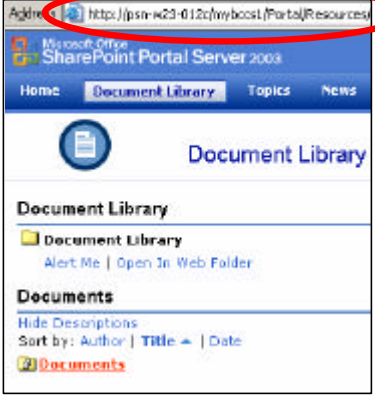
Parallelspace Corporation | Active Collaboration Solutions for Information Sharing | 10



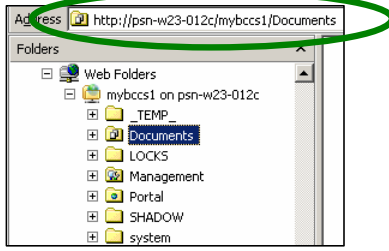
Michael Herman mwherman@parallelspace.net | Parallelspace Corporation (866) 763-8727 | ? www.parallelspace.net/sharepoint

Using the Spout.exe Export Tool

Getting Started: Backward Compatible Doc Library



Wrong URL



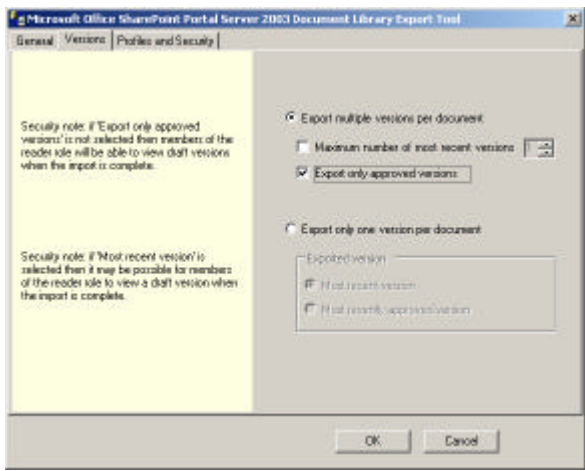
Correct URL

Parallelspace Corporation Active Collaboration Solutions for Information Sharing 13

Michael Herman mwherman@parallelspace.net | Parallelspace Corporation (866) 763-8727 | ? www.parallelspace.net/sharepoint

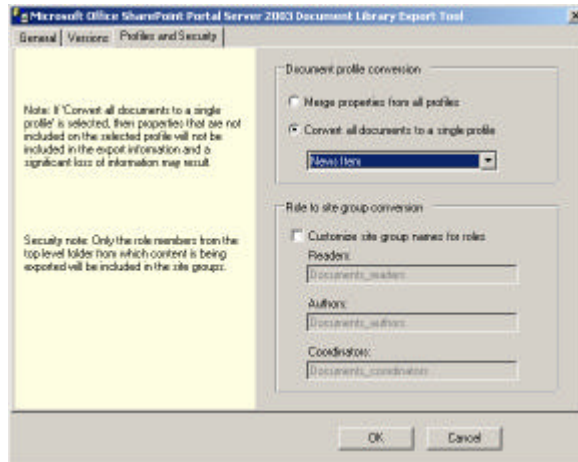
Using the Spout.exe Export Tool

Versions Settings

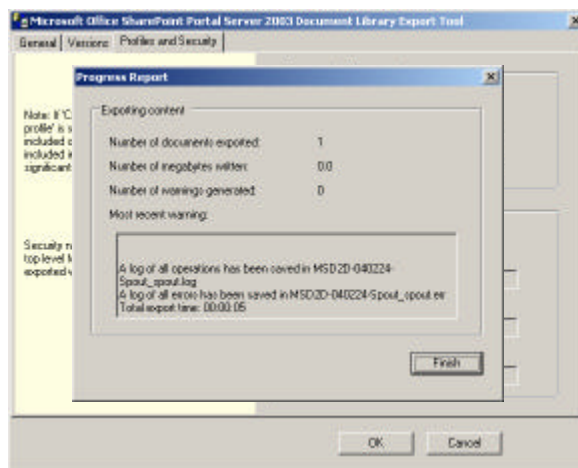


Parallelspace Corporation Active Collaboration Solutions for Information Sharing 14

Using the Spout.exe Export Tool Profiles and Security Settings



Using the Spout.exe Export Tool Running the Export...



Using the Spin.exe Import Tool Getting Started

```

C:\MS SPS2003 Migration Tools>dir
Volume in drive C has no label.
Volume Serial Number is B4B5-C637

Directory of C:\MS SPS2003 Migration Tools

02/15/2004 08:01 PM <DIR>          .
02/15/2004 08:01 PM <DIR>          ..
02/15/2004 08:01 PM             3,710 MSD2D-040224-Spout.xml
02/15/2004 08:01 PM <DIR>          MSD2D-040224-Spout_files
02/15/2004 08:01 PM             0 MSD2D-040224-Spout_spout.err
02/15/2004 08:01 PM          14,534 MSD2D-040224-Spout_spout.log
02/15/2004 08:01 PM          199,168 Setup.EXE
02/08/2004 09:26 AM          142,024 SPin.exe
02/11/2004 06:27 PM          110,212 spinspouthelp.nht
02/08/2004 09:26 AM          277,192 SPout.exe
              7 File(s)          746,840 bytes
              3 Dir(s)          171,675,648 bytes free

C:\MS SPS2003 Migration Tools>spin.exe
Microsoft Office SharePoint Portal Server 2003 Document Library Import Tool
Usage: Spin siteurl xml_file [/area parentarea_hierarchy] [/reportonly] [/silent]
      [/sourcesecurity ! /targetsecurity] [/renamedocs]

```

Using the Spin.exe Import Tool Running the Import...

```

C:\MS SPS2003 Migration Tools>spin.exe http://psn-w23-012c/sites/msd2d MSD2D-040224-Spout.xml

Validating .xml file. This might take several minutes.
The .xml file is valid.

Disabling search schedule.

Verifying database access ...

Importing content.

Percentage completed: 100.00 %

Content was successfully imported.

Enabling search schedule.

Import Statistics:
Number of site groups created: 0
Number of areas created or modified: 0
Number of document libraries created or modified: 1
Number of folders created or modified: 2
Number of documents (not counting versions) imported: 1

Total time: 00:00:07

```

Using the Spin.exe Import Tool Spin.exe (and Spout.exe) Log Files

```
C:\MS SPS2003 Migration Tools>dir
Volume in drive C has no label.
Volume Serial Number is B4B5-C637

Directory of C:\MS SPS2003 Migration Tools

02/15/2004 08:09 PM <DIR>          .
02/15/2004 08:09 PM <DIR>          ..
02/15/2004 08:01 PM             3,710 MSD2D-040224-Spout.xml
02/15/2004 08:01 PM             <DIR>    MSD2D-040224-Spout_files
02/15/2004 08:09 PM             217 MSD2D-040224-Spout_spin.err
02/15/2004 08:09 PM             7,205 MSD2D-040224-Spout_spin.log
02/15/2004 08:01 PM              0 MSD2D-040224-Spout_spout.err
02/15/2004 08:01 PM            14,534 MSD2D-040224-Spout_spout.log
02/15/2004 07:42 PM            199,168 Setup.EXE
02/08/2004 09:26 AM            142,024 SPin.exe
02/11/2004 06:27 PM            110,212 spinspouthelp.mht
02/08/2004 09:26 AM            277,192 SPout.exe
               9 File(s)          754,262 bytes
               3 Dir(s)          162,684,928 bytes free
```

Using Smigrate.exe Windows SharePoint Services Migration Tool

```
C:\Program Files\Microsoft Office Project Server 2003 Resource Kit\Toolbox\SMIGRATE Utility>smigrate
Backs up or restores a SharePoint Web site.

Usage (backup): smigrate -w <website URL> -f <backup file> [-e] [-y]
Usage (restore): smigrate -r -w <website URL> -f <backup file> [-x]

Operations and Parameters:
-f Backup filename - required. Specify a filename with the extension .fwp.
-e Exclude subsites during backup - optional. No parameters.
-r Restore - optional. No parameters.
-w Website URL - required. Valid URL to a SharePoint Web site.
-x Exclude security during restore - optional. No parameters.
-y Confirm that you want to overwrite an existing backup file.
-u Administrator username.
-pw Administrator password.
Specify * as the password to be prompted for a password.

Example backup:
smigrate -w http://server -f backup.fwp
smigrate -w http://server -f c:\backups\backup.fwp
smigrate -w http://server -f \\share\folder\backup.fwp
smigrate -w http://server -f c:\backups\backup.fwp -e -y

Example restore:
smigrate -r -w http://server -f backup.fwp
smigrate -r -w http://server -f c:\backups\backup.fwp
smigrate -r -w http://server -f \\share\folder\backup.fwp
smigrate -r -w http://server -f c:\backups\backup.fwp -x
```

Using Smigrate.exe Windows SharePoint Services Migration Tool

```

C:\Program Files\Microsoft Office Project Server 2003 Resource Kit\Toolbox\SMIGRATE Utility>smigrate -w http://psn-w23-012c/sites/msd2d -f MSD2D-040224-Sm.fwp -u Administrator -pw *
Please enter password:
15 Feb 2004 20:23:18 -0500      Site collection opened
15 Feb 2004 20:23:18 -0500      Authenticating against the web server.
15 Feb 2004 20:23:18 -0500      Site opened
Progress: Starting Backup.
Progress: Opening service /sites/msd2d.
Progress: Finished open service http://psn-w23-012c/sites/msd2d
Progress: Server version is: 6.0.2.5523
Progress: Fetching Manifest
Progress: Manifest obtained
Progress: Fetching Files
Progress: Finish listing files
Progress: Retrieving pages from http://psn-w23-012c/sites/msd2d...
Progress: Fetching 64 files (Chunk 1/1) - default.aspx
Progress: Documents retrieved 405383 of 405383 bytes
Progress: Listing versions for 91 files
Progress: Fetching 1 file versions
Progress: Writing file data to manifest file
Progress: Generating package file
Progress: Cabinet 0 2314280864
Progress: Package file built
15 Feb 2004 20:23:21 -0500      Site backup completed
15 Feb 2004 20:23:21 -0500      Site closed
15 Feb 2004 20:23:21 -0500      Site collection closed

```

Using Smigrate.exe Windows SharePoint Services Migration Tool

```

C:\Program Files\Microsoft Office Project Server 2003 Resource Kit\Toolbox\SMIGRATE Utility>dir
Volume in drive C has no label.
Volume Serial Number is B4B5-C637

Directory of C:\Program Files\Microsoft Office Project Server 2003 Resource Kit\Toolbox\SMIGRATE Utility

02/15/2004 08:23 PM <DIR>      .
02/15/2004 08:23 PM <DIR>      ..
12/16/2003 11:30 AM          114,688 CABARC.EXE
01/13/2004 10:54 AM           9,514 EULA.txt
12/16/2003 11:30 AM          100,864 EXTRACT.EXE
02/15/2004 08:23 PM           231,428 MSD2D-040224-Sm.fwp
12/16/2003 11:30 AM          1,728,064 SMIGRATE.EXE
01/14/2004 12:14 PM           46,592 SMIGRATE.exe Utility.doc
6 File(s)          2,231,150 bytes
2 Dir(s)           157,339,648 bytes free

```

Other Scenarios

- Cross-Language Portal Migration
- Pre-Populating My Site Personal Sites
- Taxonomy-Driven Portal Design and Deployment
 - Site Directory, Best Bets and Portal Areas
 - *“Microsoft Web Enterprise Portal” white paper*
- Inter-Site Replication

Migration Best Practices

- Build or Buy a Migration Framework
 - Components
 - Reference architecture, process, toolset, best practices
 - Planning and cost estimation tools
 - Taxonomy-driven design, deployment and migration
- Migration Tool Considerations
 - GUI is great – scriptable console tools are better
 - Taxonomy management tools
 - Effective support for content migration “dry runs”

Where Have We Been Today?

- Thinking Through Your Portal Migration
 - Presentation, Services and Content Migration
 - Upgrade vs. Co-existence vs. Migration Strategies
 - Planning, Costing and Execution
- SharePoint 2003 Out-The-Box Capabilities
 - Upgrade.exe
 - *New* Document Library Migration Tools
- Migration Best Practices

Questions?

- We're available to talk about our experience and how we can help you solve your portal and content migration requirements.
- Simply email us at

? sharepoint@parallelspace.net

or, call us at:

? (866) 763-8727 x111

We look forward
to hearing from
you!

Parallelspace Corporation Offerings

Parallelspace PresPart™ Portal Migration Framework

- PresPart ESP™
 - 3-D complexity-based model for planning, estimating and executing portal migration projects
 - Presentation, services and content
 - Version-to-version and platform-to-platform
- Parallelspace ACMS™ 2.0
 - Accelerated Content Migration Service for SharePoint
 - Parallelspace Knowledge Master™
 - Parallelspace ContentCourier™
 - Portal and content migration best practices